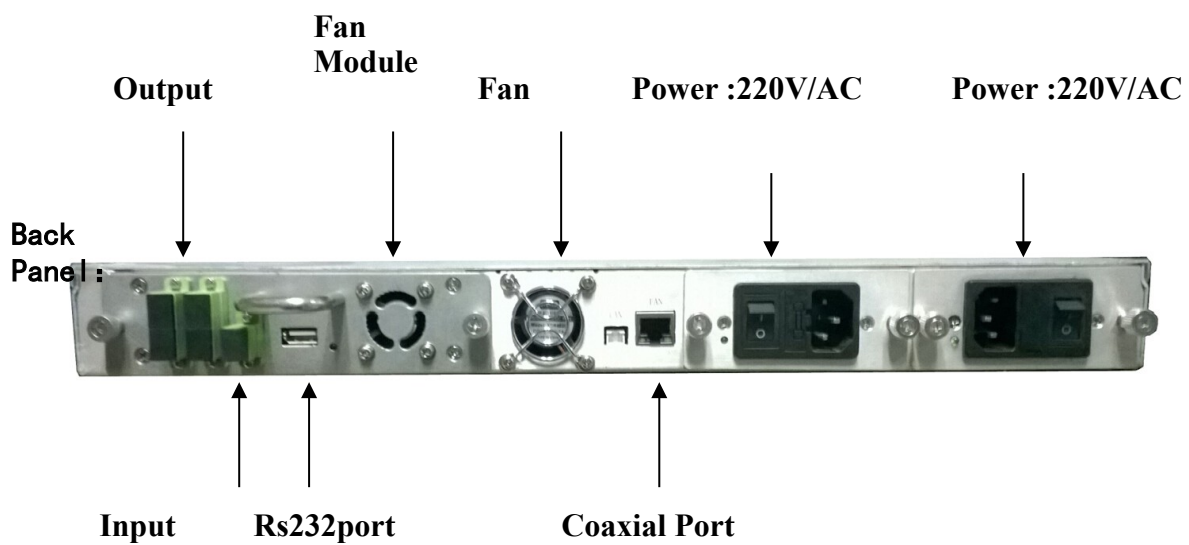
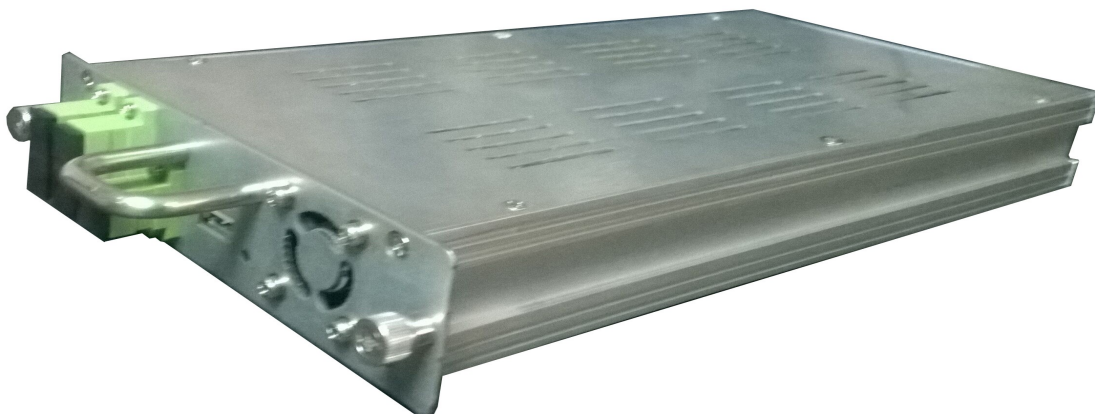


MODEL-ED-843 1550nm EDFA Amplifier

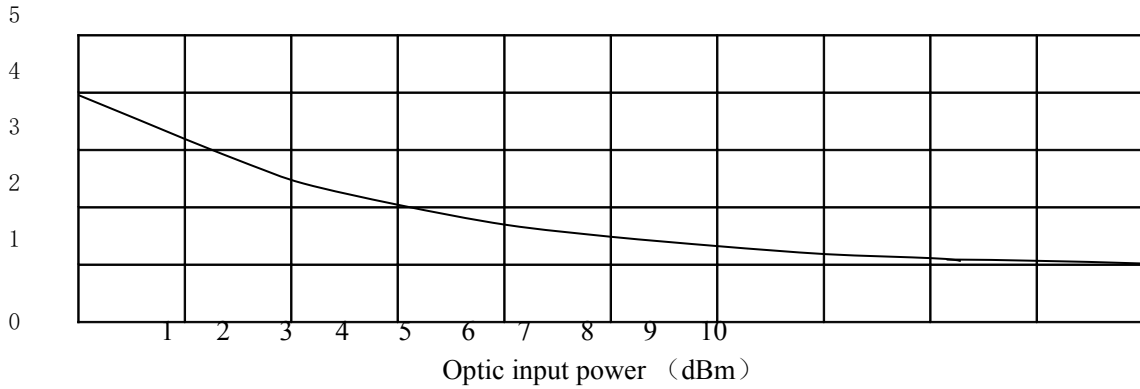


EDFA
Internal Module:



后面指示灯
光输入口
风机 1
光输出口
以太网接口

Optical link indicators: carrier to noise ratio degradation watch carrier to noise ratio degradation



Manual :

Pls push the front panel button ESC、↵、▲、▼, can show and set up working parameter。MCU

Microsoft have Laser Monitor, digital show, fault warning and SNMP,ect.

Button: (You can set up with sound or without sound when pushing button)

ESC : Cancel button , log out Menu ;

▲ : move up and down keys

▼ : move up and down keys

↵ : Confirmation

Menu UI if the EDFA can work well:

1 The machine parameter information

2 DEVICE SETTING

3 SYSTEM SETTING

▲/▼Up and down Moving, ↵ enter into next class menu, push ESC, return

to last Menu

You can check the following info. : ▲/▼

CATV 1550 EDFA
VTA-20PD

First page showing EDFA name and Model No. ;

IN-POWER: +/-xx.xx dBm
OUTPOWER: +xx.xx dBm

Current input and output optical power:

PUMP1 Bias/Temp/Cool
xx mA/xx.x°C/x.xx A

display the first Pump current, temperature, and

refrigerator current

PUMP2 Bias/Temp/Cool
xx mA/xx.x°C/x.xx A

Display the second Pump current, temperature, and

refrigerator current

Pwr +5V/-5V/BoxTemp
x.xx V/-x.xx V/xx.x°C

Display the power Voltage and temperature

Alarm Status List
Alarm Items :[*] ↵

Enter into next Class menu, check the details warning list

DEVICE SETTING:
PRESS [ENT] KEY...

Enter into next class menu, and set up every

specification;

SYSTEM SETTING:
PRESS [ENT] KEY...

Enter into next Class menu and set up the software system ;

SYSTEM INFORMATION
PRESS [ENT] KEY...

Enter into next class menu, check the system details, if you change the

menu mode to “FULL” in the system setting, then will add 2 more function display:

Fun Mod/Sta/Buz Set
[xxxx]/[xxx]/[xxx]

Display Fan Mode, Fan status and Buzzer setting state

(year)/(month)/(date)
(Day). (Hour):(min):(second)

Display Date, time, Connected to the automatic synchronization,

otherwise have to manually.

DEVICE SETTING :

- 1、 Unit Change
- 2、 Output db regulation (OPT. Adj)
- 3、 Display setting value of upper and lower limits
- 4、 Fan parameter setting
- 5、 restore factory setting

Choose **DEVICE SETTING**, push **↓** button , enter into **DEVICE SETTING** secondary menu , use **▲/▼** to browse the modify parameter, if you wanna modify which parameter, then push the button **↓**, **then modify it.** Use **▲/▼** Change the parameter, push **↓** to save **the changed information, keeping on moving the ▲/▼** to browse and modify other information or you choose “ESC” to return the last Class menu

SYSTEM SETTING :

- 1、 Menu Mode and Motion Setting
- 2、 LCD Mode and Motion setting
- 3、 Buzzer setting
- 4、 Network setting
- 5、 Date setting

use ▲/▼ to browse the modify parameter, if you wanna modify which parameter, then push the button ↓, **then modify it.** Use ▲/▼Change the parameter, push↓ to **save the changed information, keeping on moving the ▲/▼** to browse and modify other information or you choose “ESC” to return the last Class menu

- 1 **Model No:** VTA-XXPM
- 2 **Optical power (INPUT) :** Displaying the input optical power dbm on the back side of EDFA
Input db > +10 dBm, warning On ;
Input db < -12 dBm, Display NO INPUT, Automatically open circuit pumped laser bias;
Input db > 0 dBm, can meet The rated power output value.
- 3 **Optical power (OUTPUT) :** display the output db value of the back side output of EDFA (dBm) 。
Error allowance < ±0.2 dBm,
Output db can set the attenuation in the “DEVICE SETTING” “OUT OPT.Adj.”, attenuation should be **0dBm~8dBm**,
If no optical input, the laser pump power will off, LCM display (OUTPOWER Low) 。
- 4 **Laser pump working TEMP:** °C, The temperature should be 20°C – 30°C, when we check the working term is more than 20°C – 30°C, LCM will display “READY”, Red light will flashing and warning , then the power will off automatically, protect the pump very well.
- 5 **PUMP Currency (BIAS) :** when you set the working parameter is more than standard parameter, then warning, and power off automatically.
- 6 **COOLING / HEATING:** Keep the PUMP temperature to be around 25°C
If the EDFA is in Hot Environment, LCDsholw Cooling Value
If the EDFA is in Cold Environment, LCD show heating Value
- 7 **Voltage +5V READS:** More than ±0.5V, warning user 。
- 8 **-5V Voltage (-5V READS) :** More than ±0.5V, warning user。
- 9 **factory serial number:** S/N: xxxxxxxxxxxx
- 10 **EDFA ID code :** user can set the network management by R232